

LE DÔME DES INVALIDES

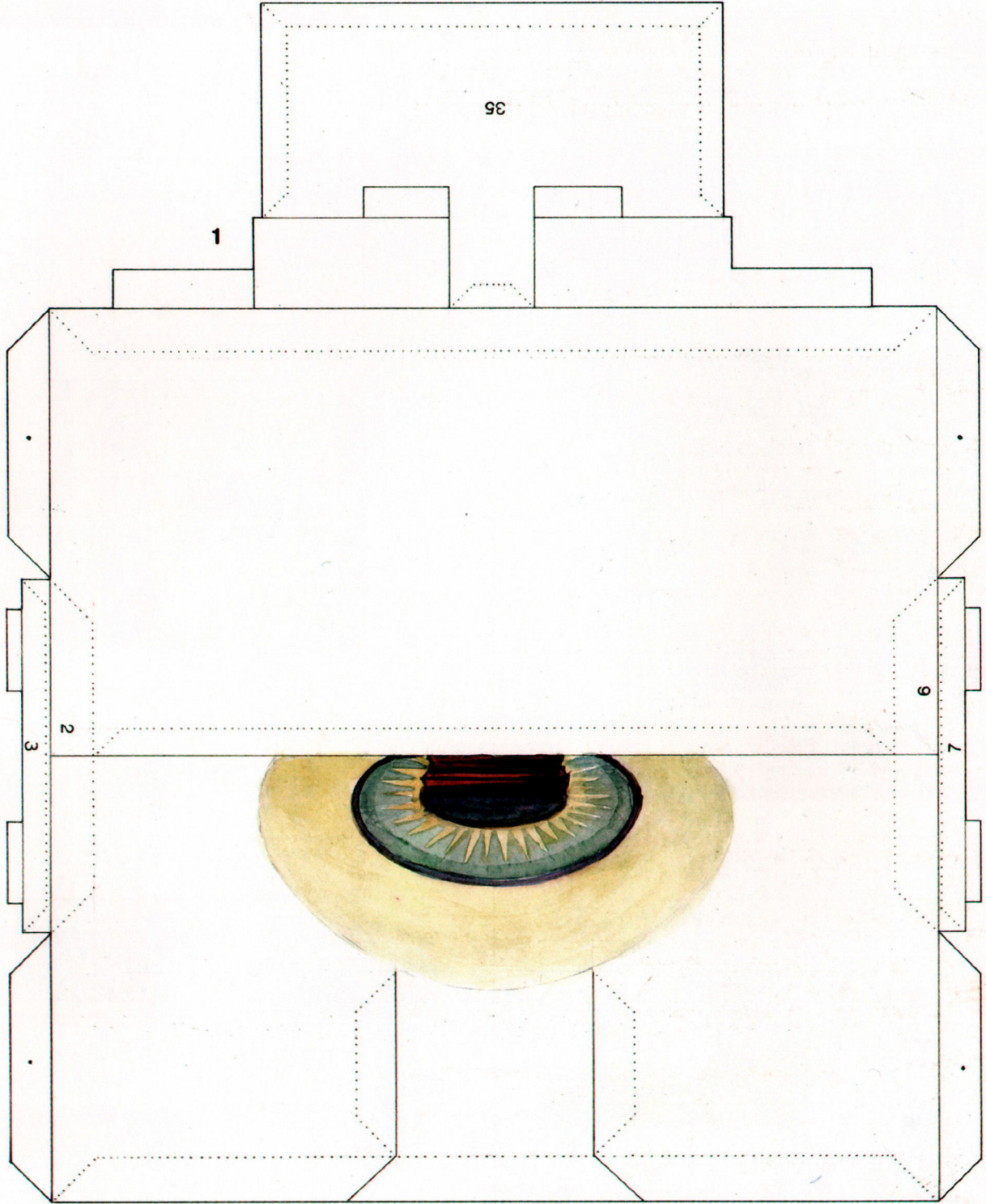
**MAQUETTE
EN PAPIER**

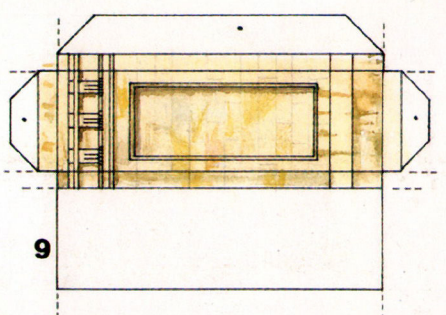
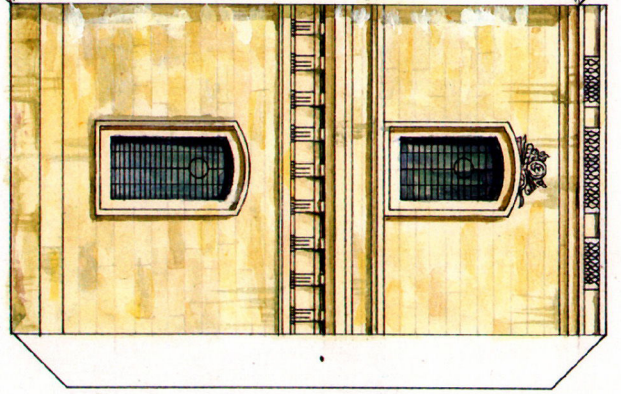
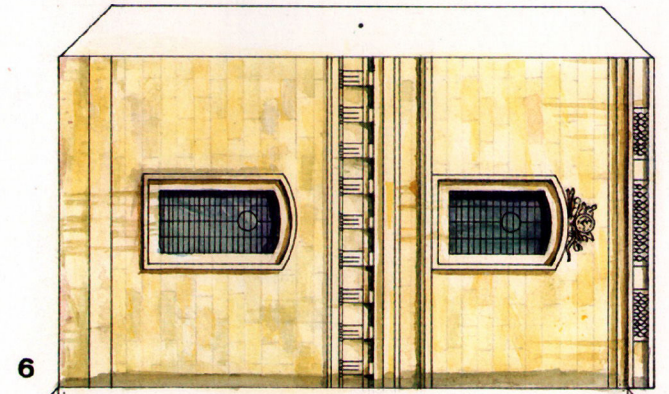
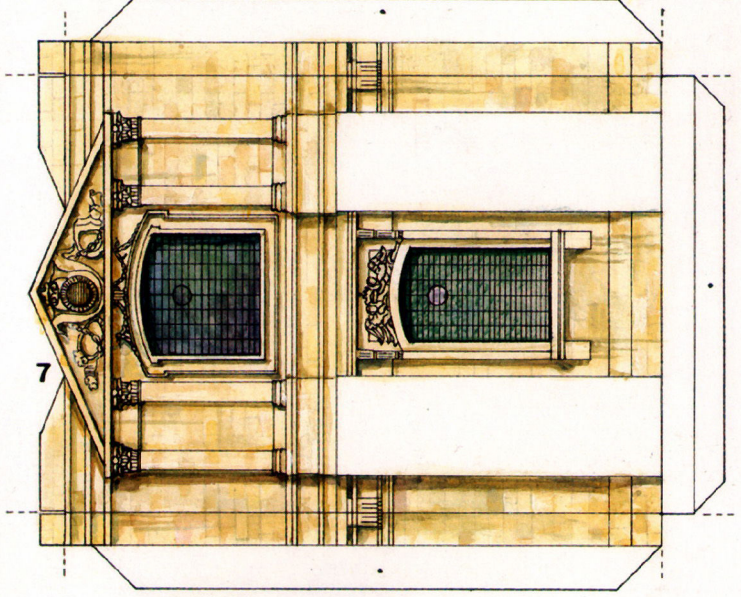
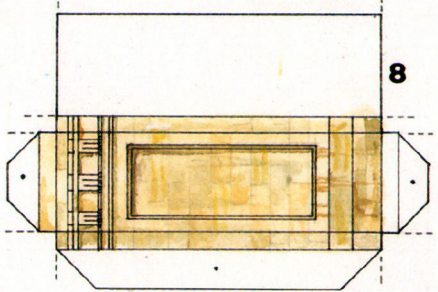
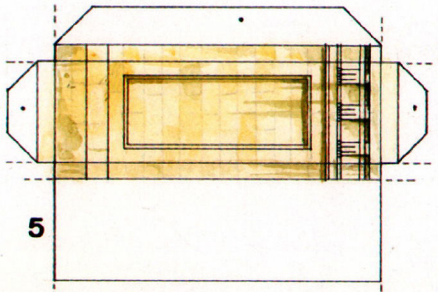
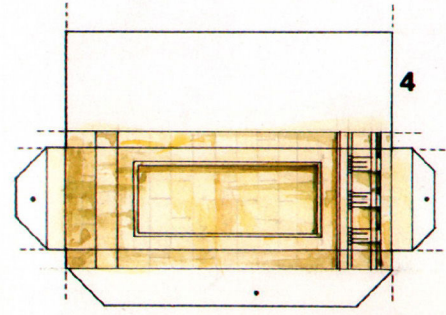
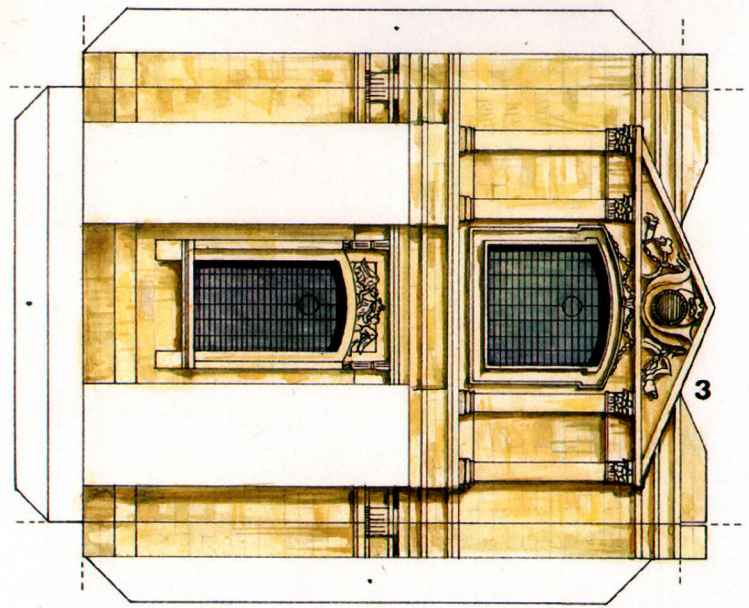
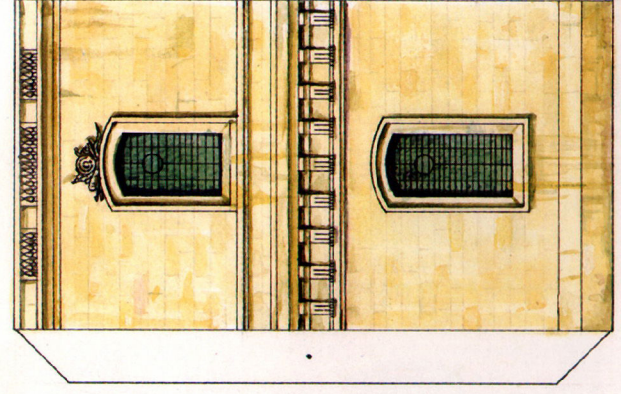
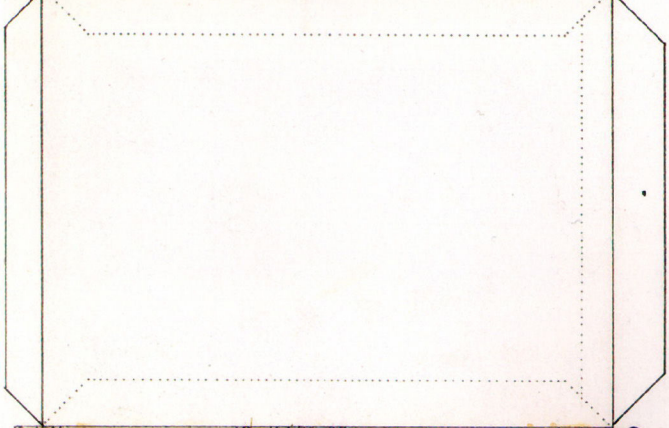
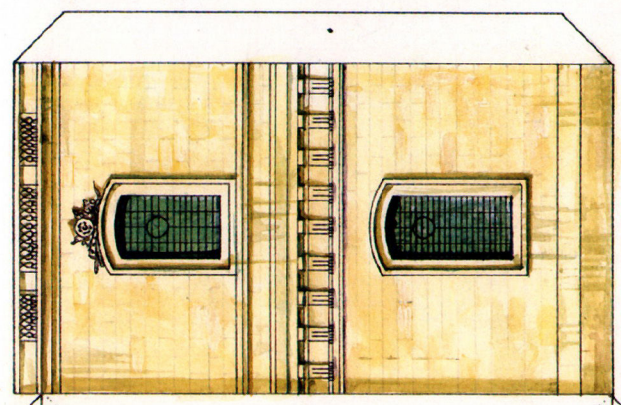
Cardboard model
Papiermodell

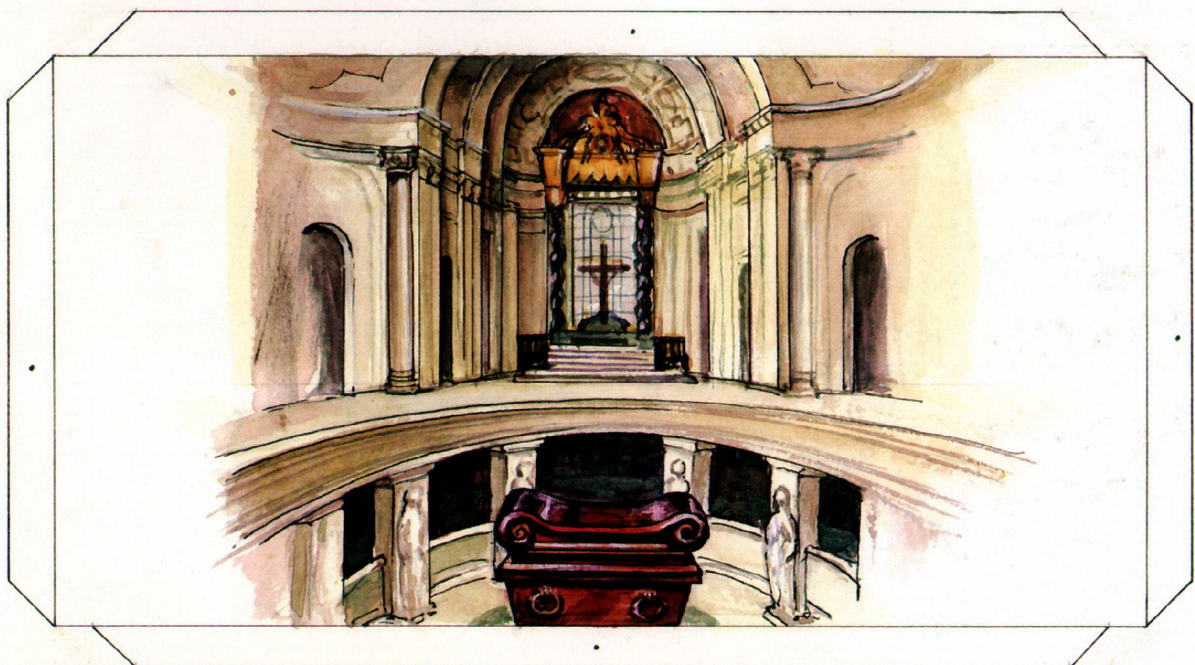
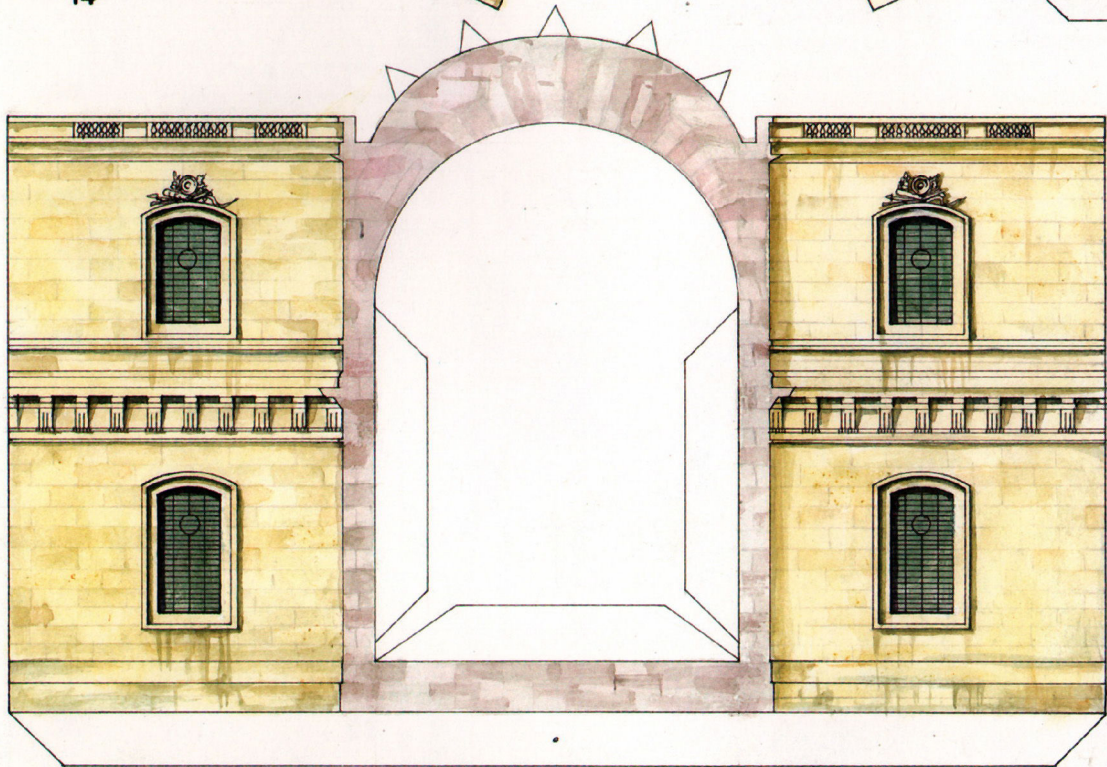
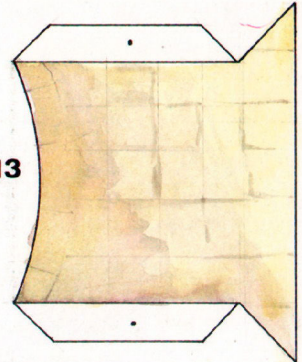
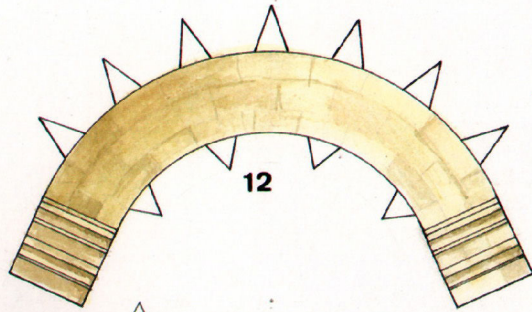
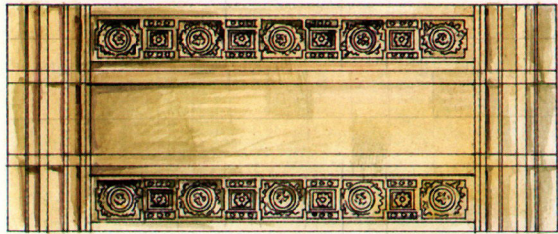
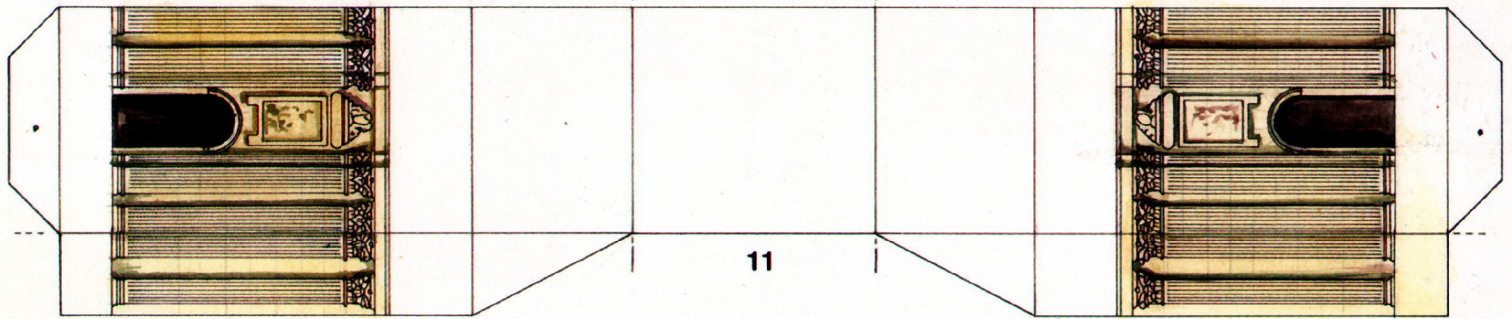
108 PIÈCES - ECHELLE 1/350
108 PIECES - SCALE 1/350
108 TEILE - MABSTAB 1/350

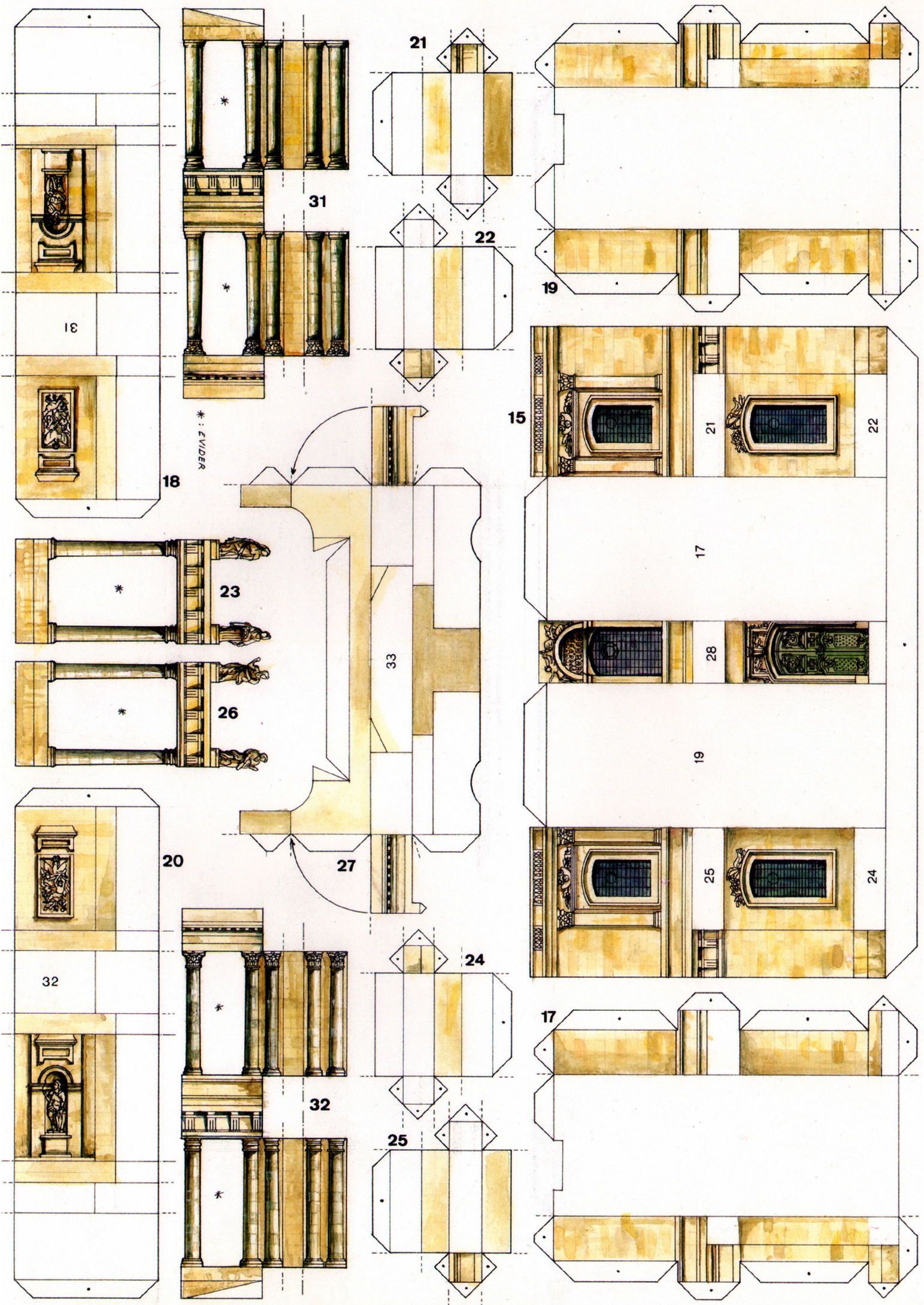


COLLECTION PIERRES DE PAPIER
EDITIONS
PASCALINE









21

31

22

19

18

* : EVIDER

18

15

21

22

17

23

33

26

28

19

20

27

25

24

32

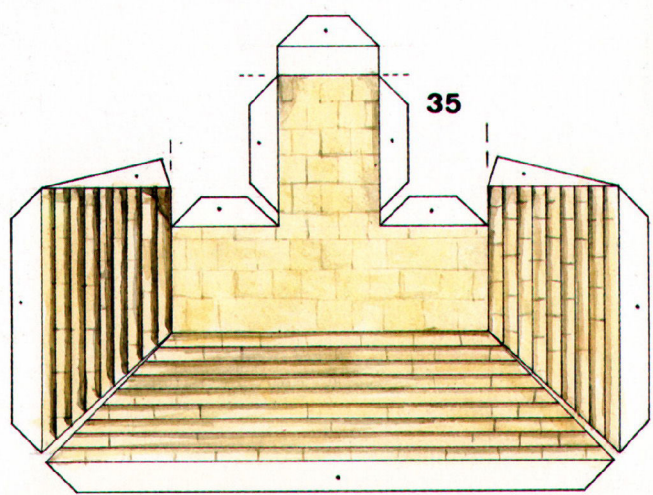
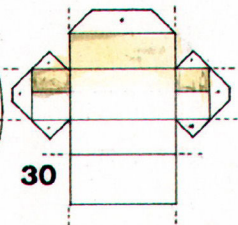
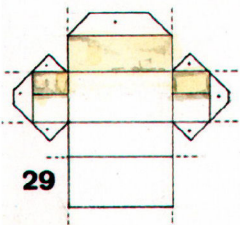
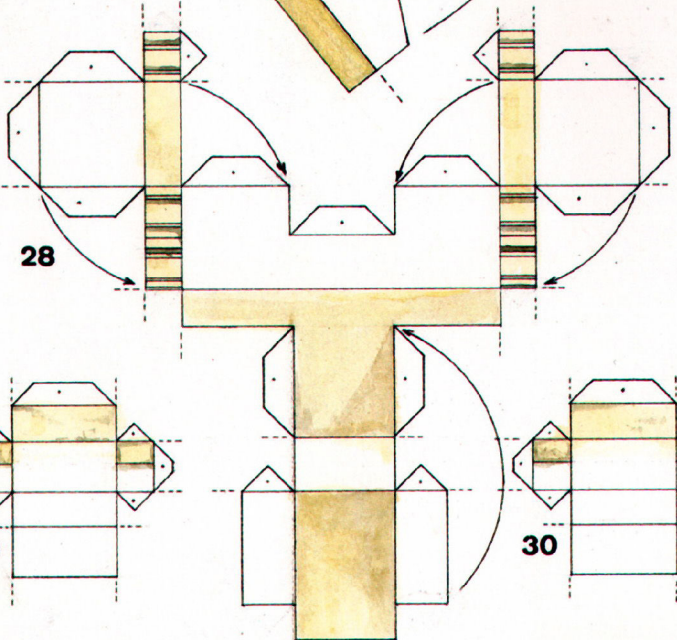
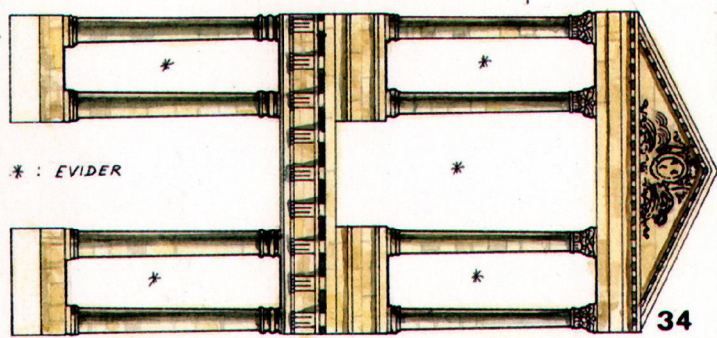
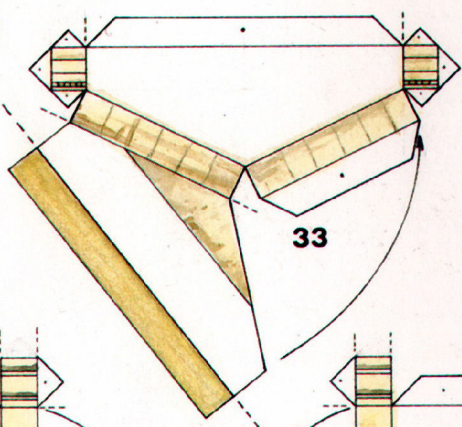
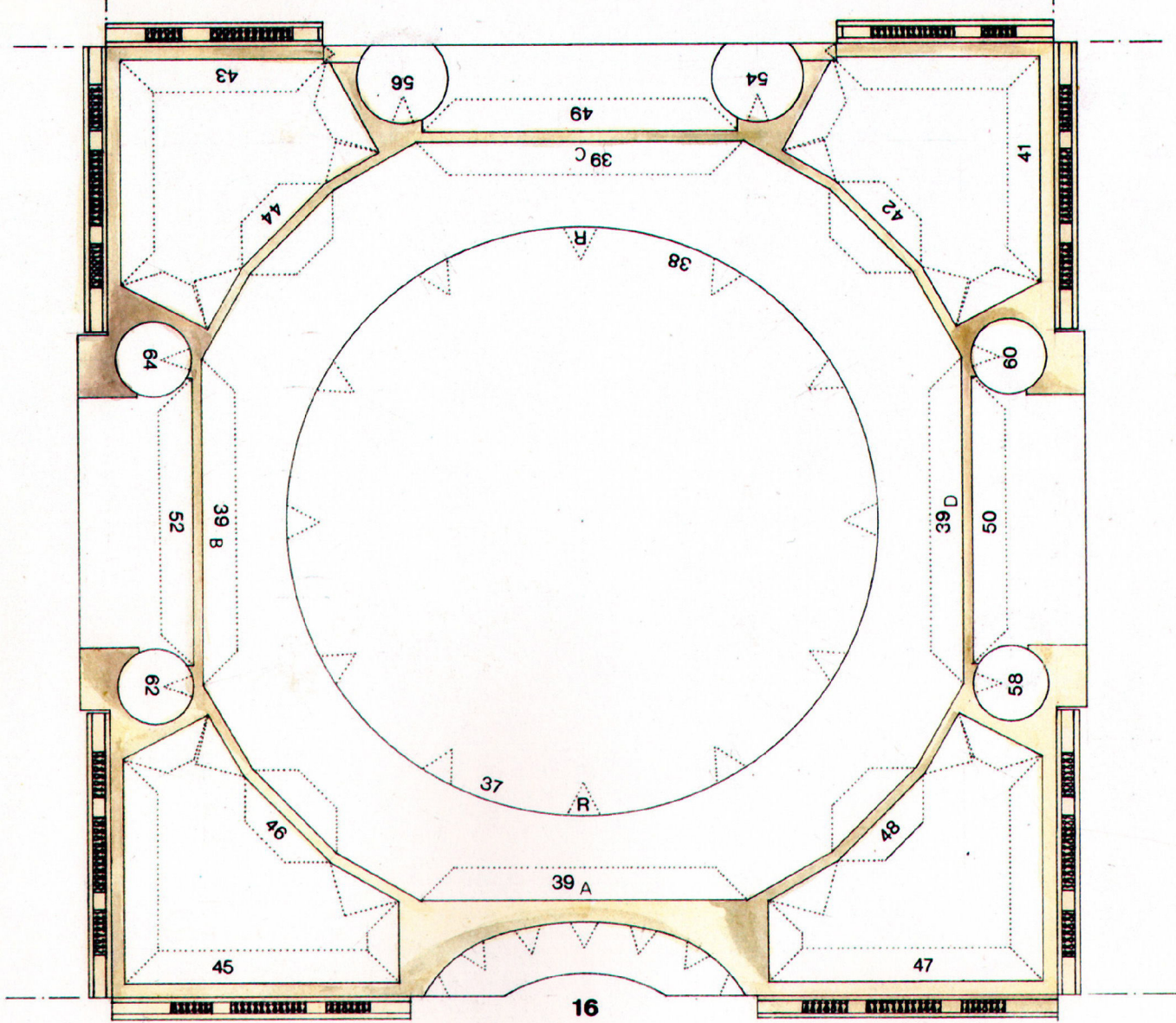
24

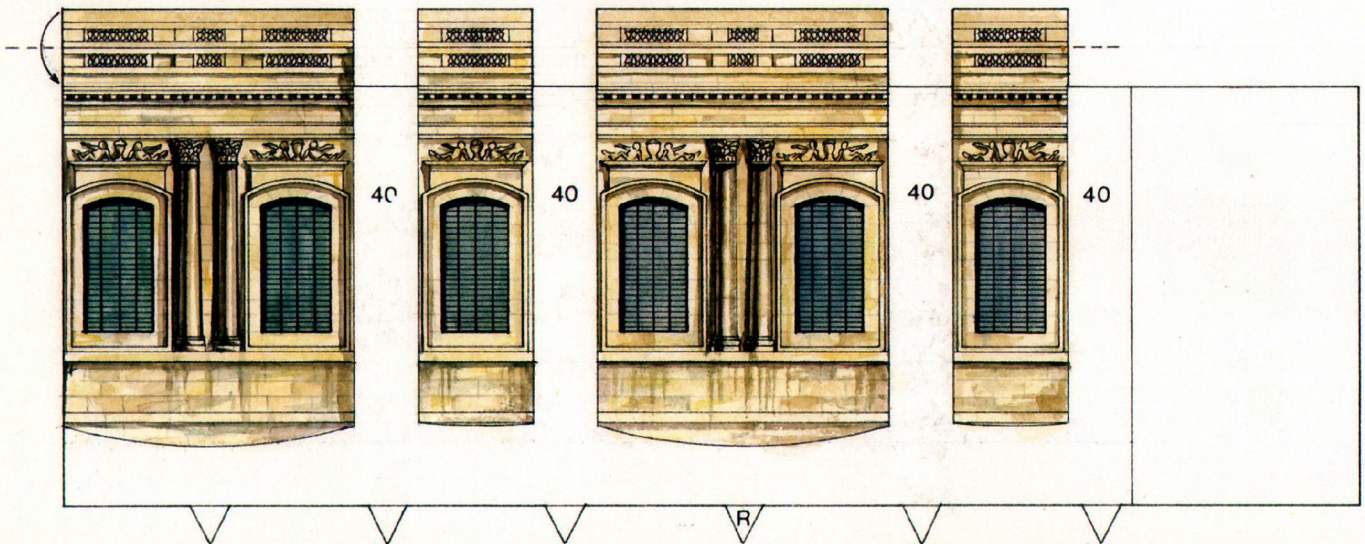
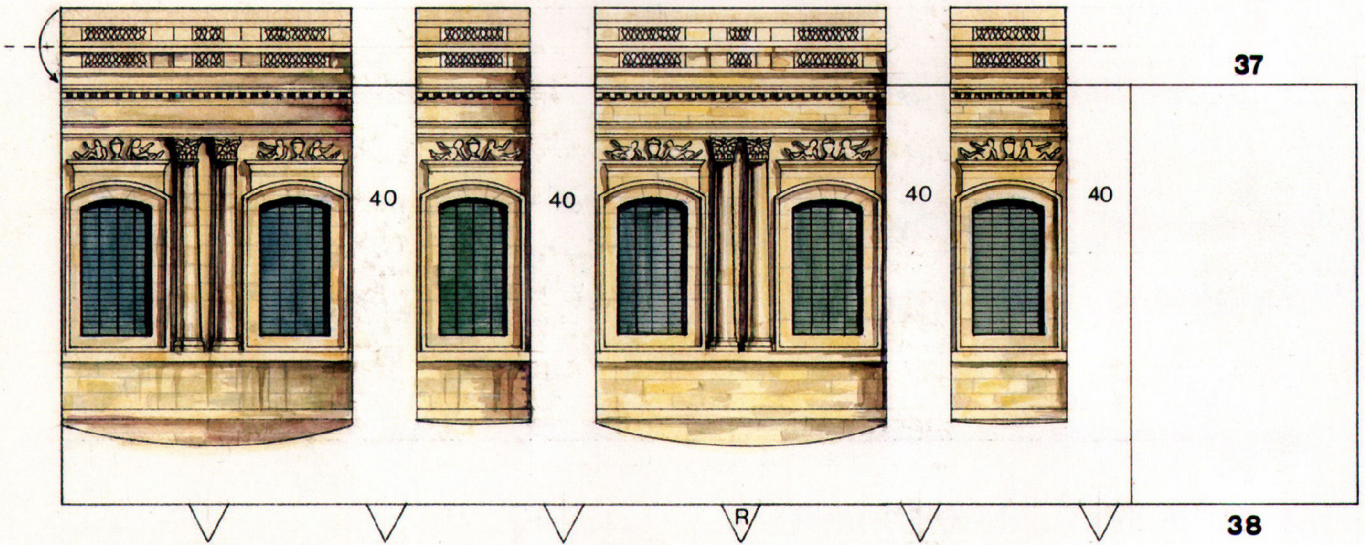
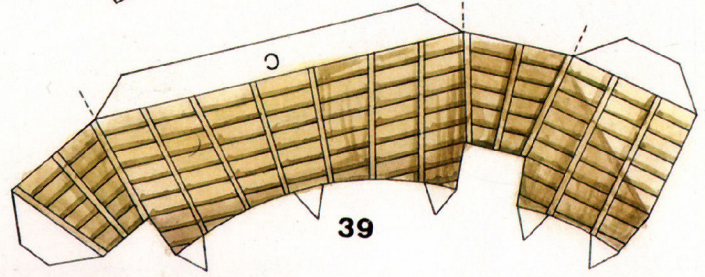
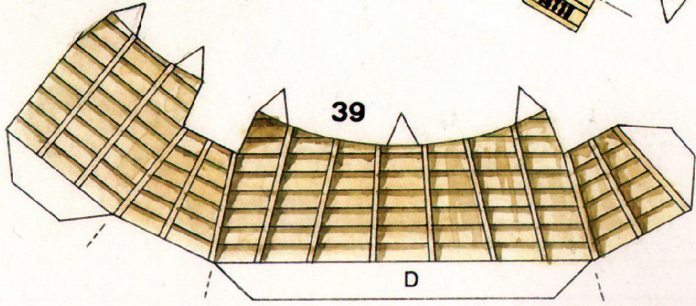
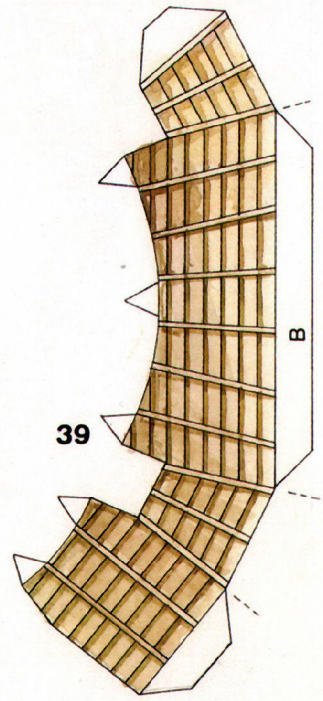
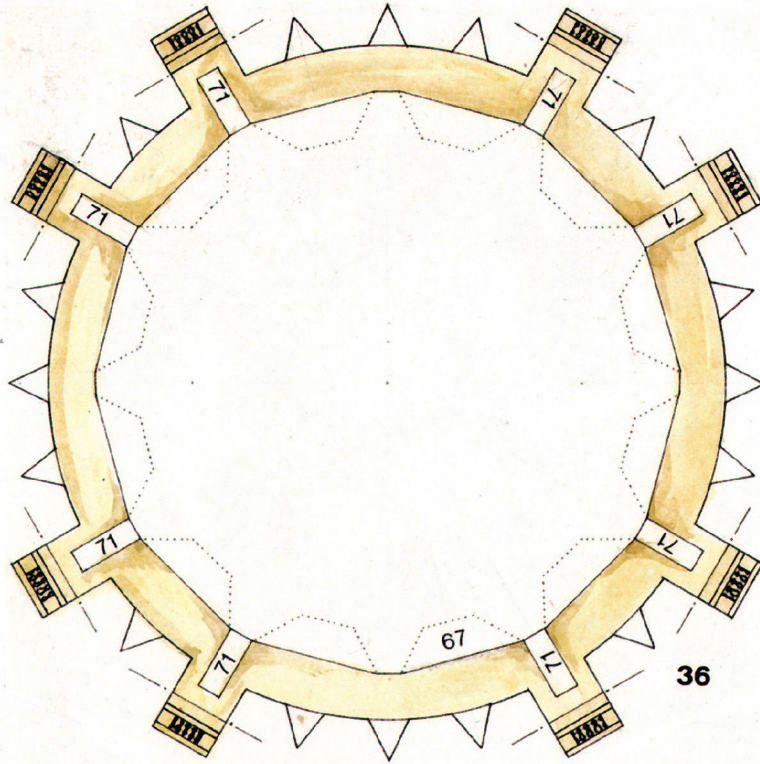
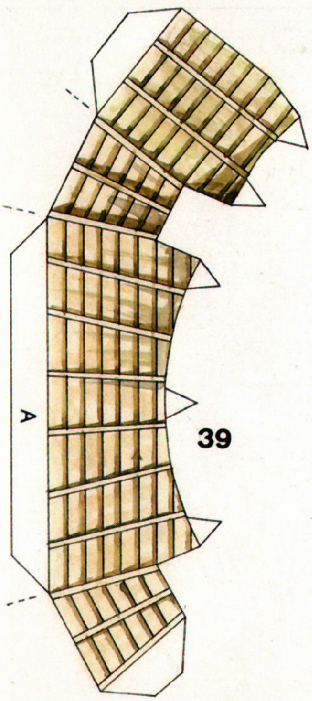
17

32

25

*

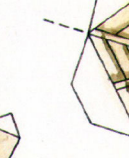
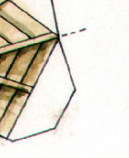
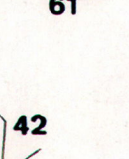
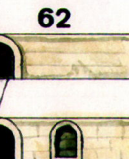
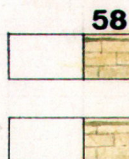
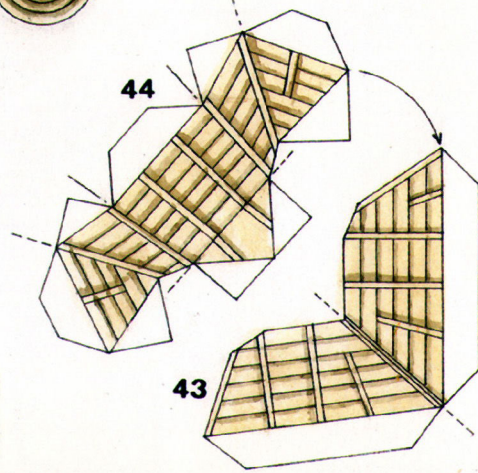
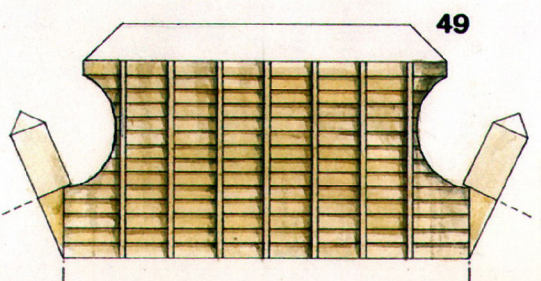
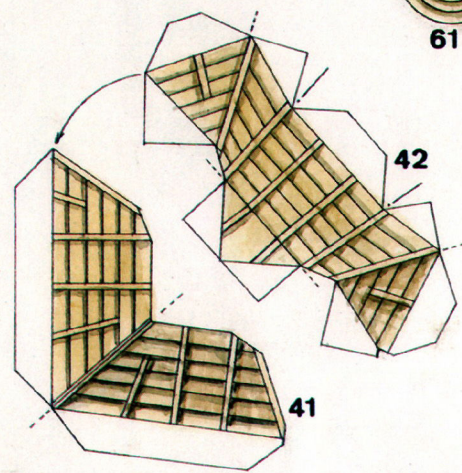
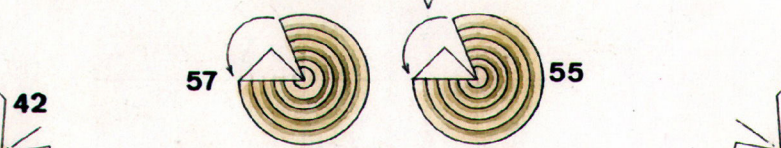
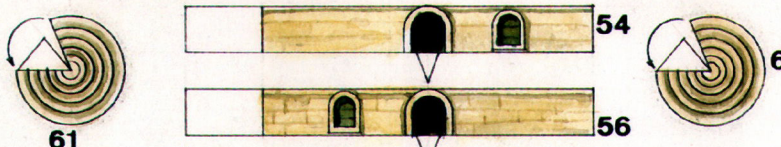
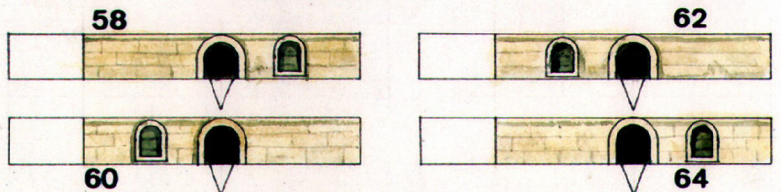
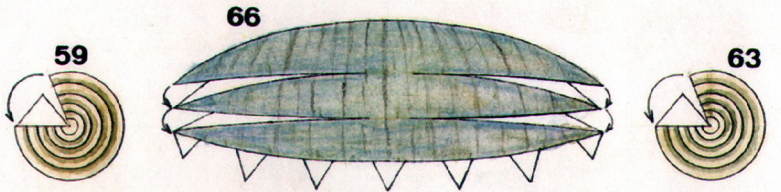
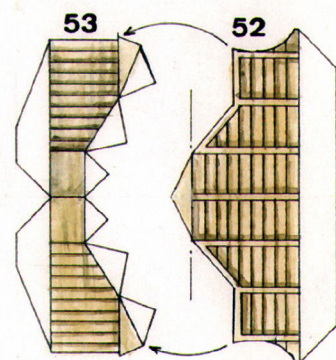
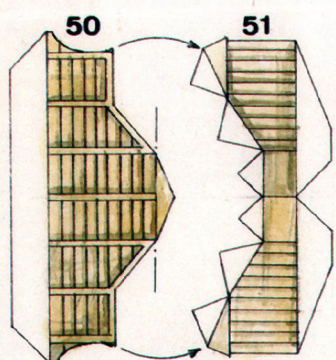
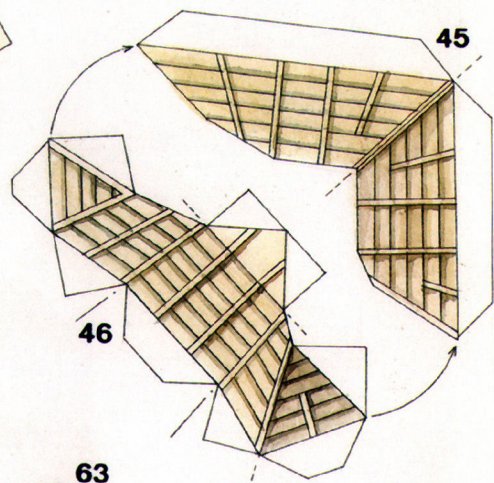
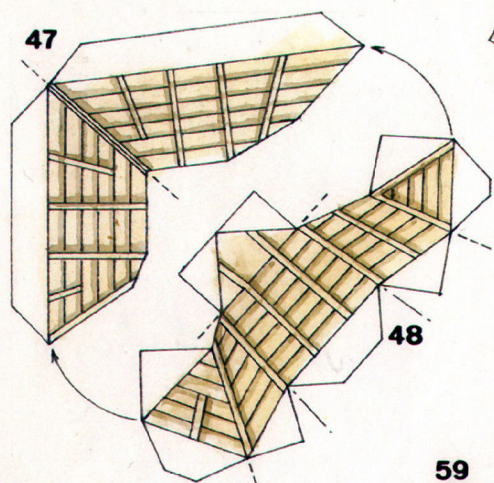
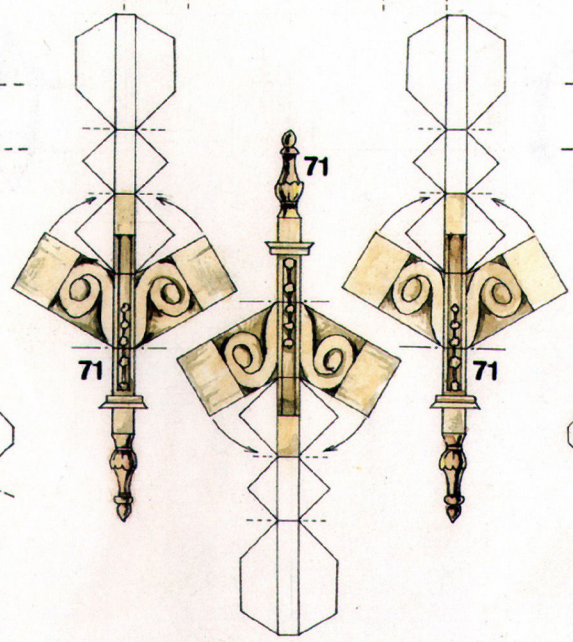
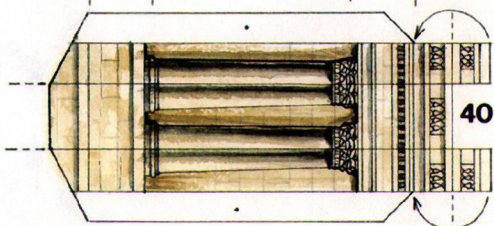
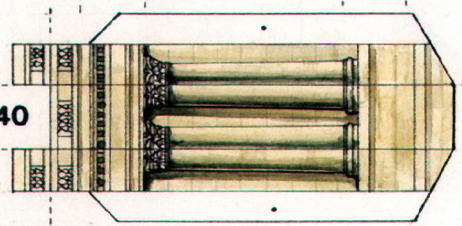
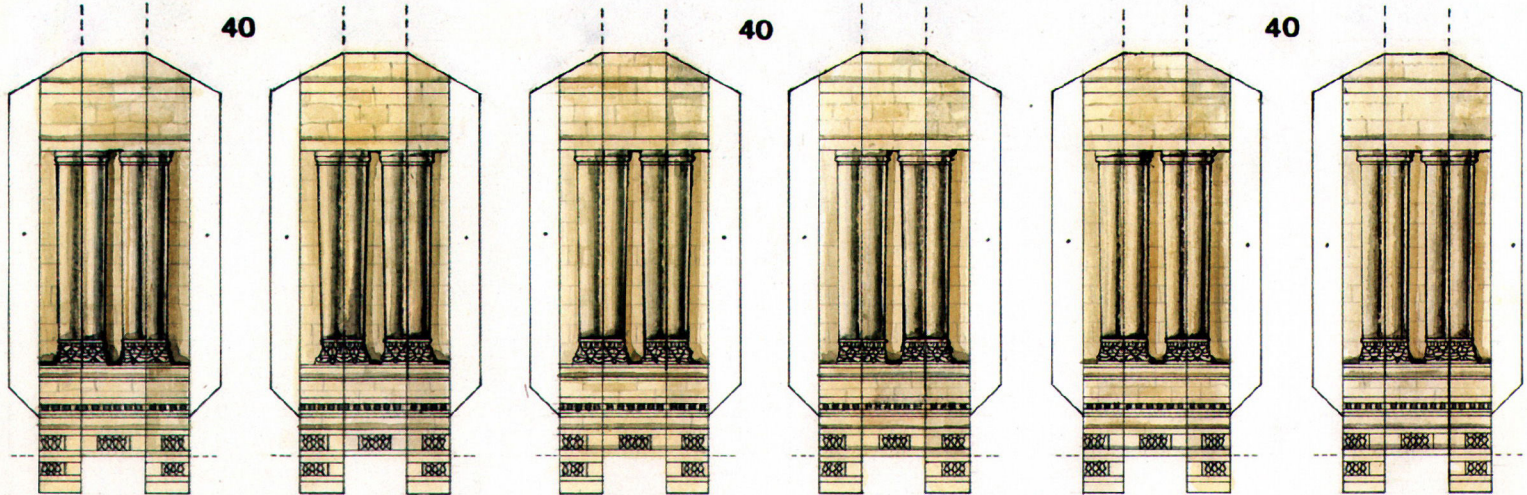


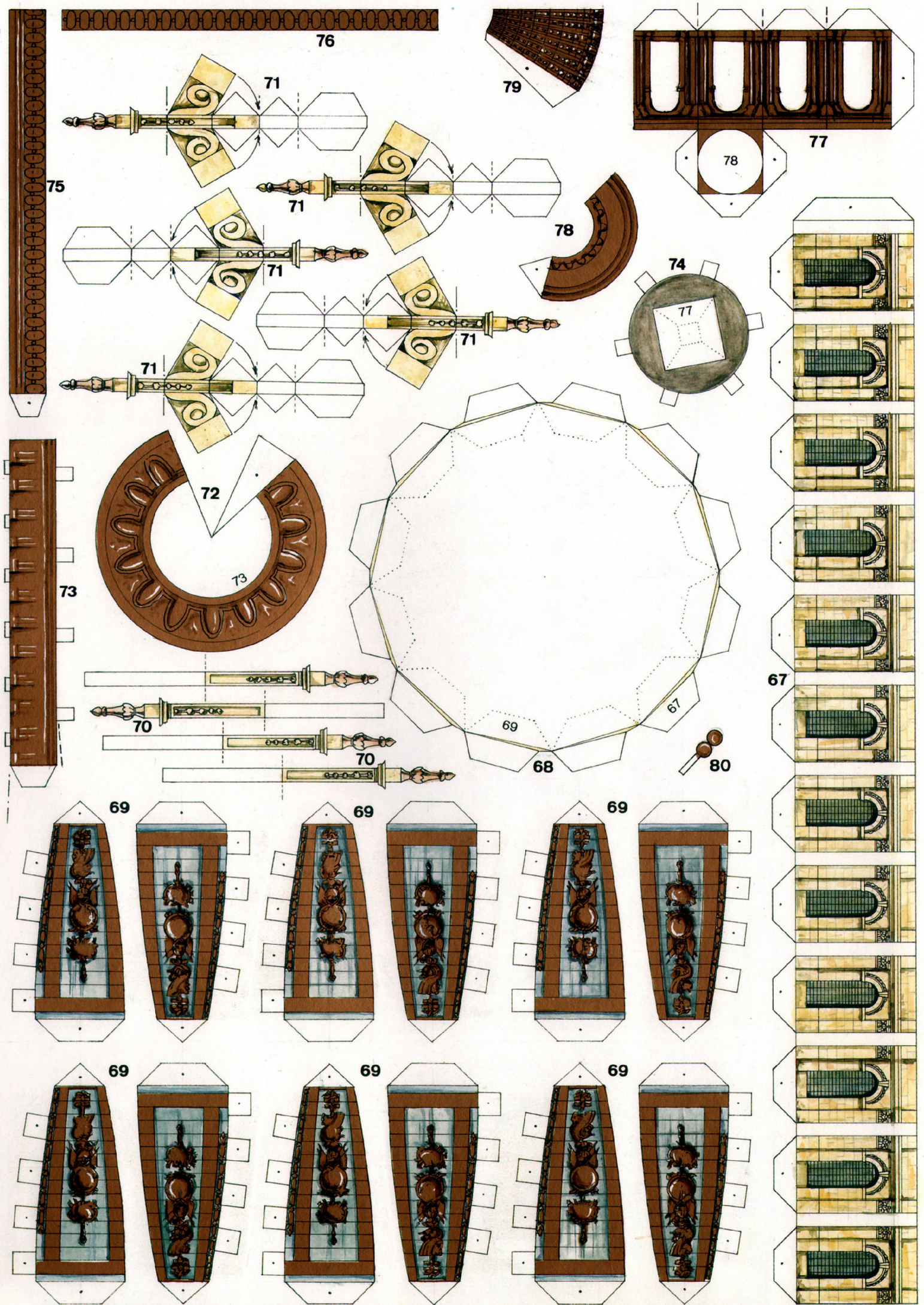


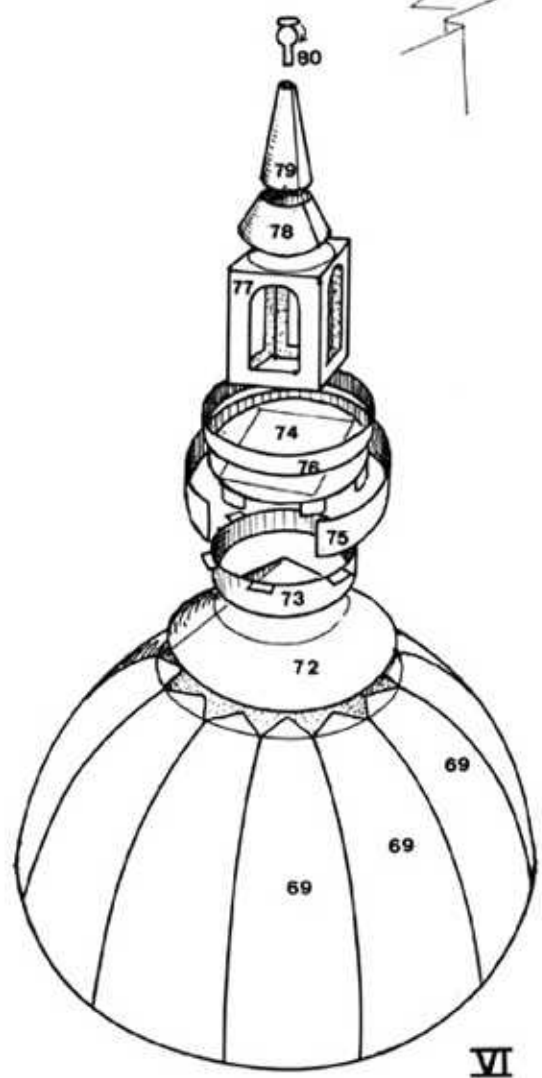
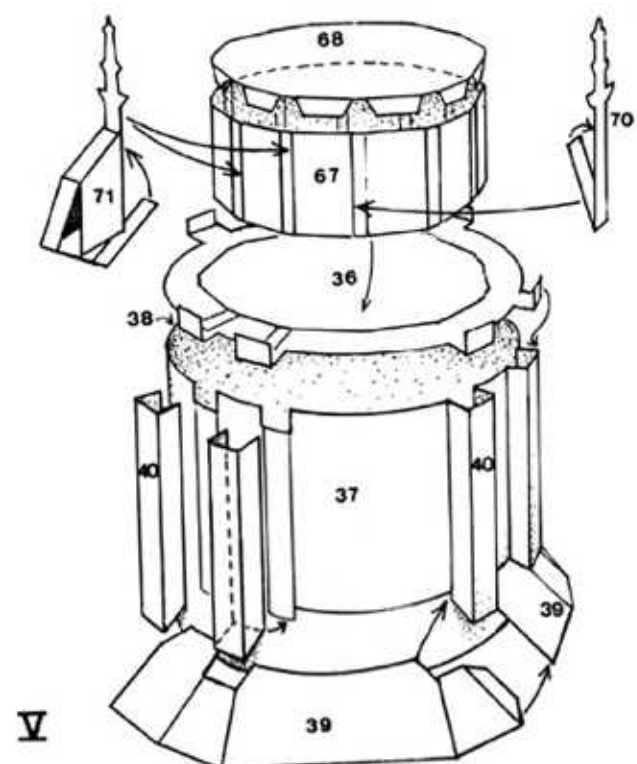
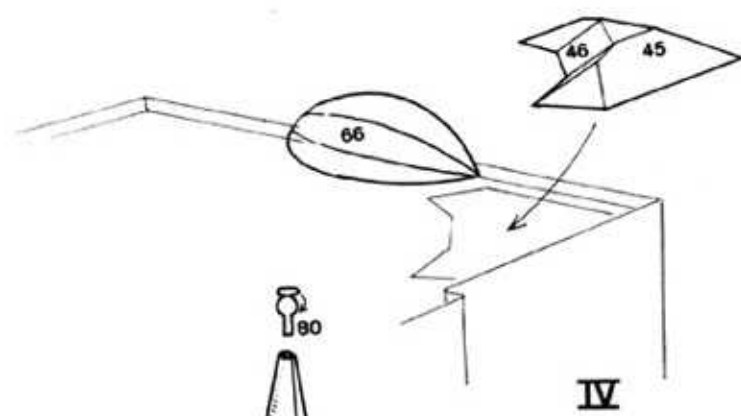
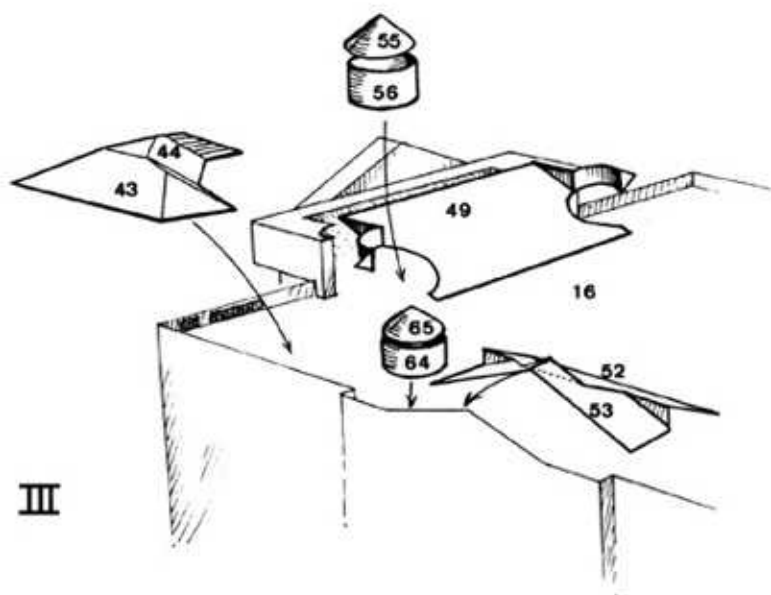
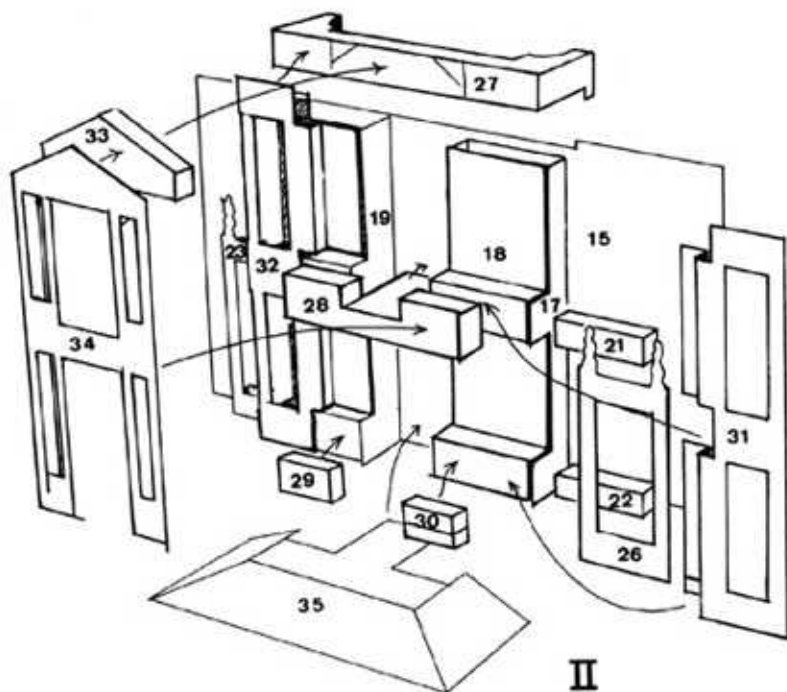
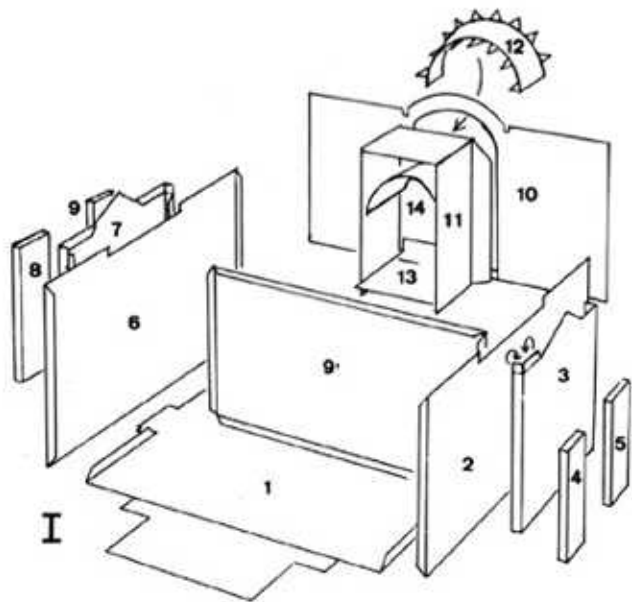
40

40

40









LE DÔME DES INVALIDES

Louis XIV a fait construire l'Hôtel des Invalides entre 1671 et 1676 pour héberger ses soldats blessés. L'église du Dôme (1679-1706), dessinée par Jules-Hardouin Mansart, vient achever ce bel exemple architectural. Les cendres de Napoléon y sont transportées en 1840 et reposent actuellement sous la coupole à l'abri du célèbre tombeau rouge.

MATÉRIEL NÉCESSAIRE

- une paire de ciseaux,
- un canif ou un cutter,
- une règle,
- de la colle en tube.

INSTRUCTIONS DE MONTAGE

Il est conseillé de bien étudier les schémas de montage et de repérer les pièces avant de les découper et de les assembler.

Les pièces sont numérotées suivant l'ordre de progression du montage. N'oubliez pas d'inscrire chaque numéro au dos des pièces.

Pliage :

Tracer les plis à l'aide du cutter et de la règle en incisant légèrement le papier.

Les lignes ---- correspondent aux plis dirigés vers l'extérieur par rapport au côté imprimé du papier. Les lignes ----- correspondent aux plis dirigés vers l'intérieur par rapport au côté imprimé du papier.

Collage :

Les numéros écrits en minuscule indiquent l'endroit où doivent se coller les pièces numérotées de la même manière en majuscule.

Schémas et instructions de montage à l'intérieur.



THE " DÔME DES INVALIDES "

Louis XIV had the Hôtel des Invalides built between 1671 and 1676 to lodge his wounded soldiers. The Church of the Dôme (1679-1706), designed by Jules-Hardouin Mansart, completes this fine example of architecture. Napoleon's ashes were taken there in 1840 and are now laid beneath the cupola covered by the famous red tomb.

MATERIALS REQUIRED

- a pair of scissors,
- a penknife,
- a ruler,
- a tube of glue.

MOUNTING INSTRUCTIONS

Study the diagrams at length, locate each piece before cutting out and assembling.

The pieces are numbered in working order. Do not forget to mark each number on the back of each piece.

Folding :

Trace the folds using the penknife and a ruler. Cut lightly, before cutting the pieces.

The lines marked ---- represent an outward fold (in relation to the printed side of the paper).

The lines marked ----- represent an inward fold.

Glueing :

The numbers written in small letters indicate the place where the pieces bearing the same number (but written in capitals) must be glued.

Mounting instructions and diagrams are included.



DER INVALIDENDOM

Ludwig XIV ließ zwischen 1671 und 1676 das Invalidenhotel errichten zur Unterbringung seiner verletzten Soldaten. Der von Jules-Hardouin Mansart entworfene Invalidendom (1679-1706) vollendet dieses Beispiel großer architektonischer Schönheit. Die Asche Napoleons wird 1840 dorthin gebracht und ruht unter der Kuppel in dem berühmten roten Grabmal.

ARBEITSMATERIALEN

- Eine Schere,
- ein Messer,
- ein Lineal,
- Klebstoff.

ARBEITSANLEITUNG

Die Anleitung zur Herstellung muss vor dem Ausschneiden und Zusammensetzen gründlich durchgelesen und verstanden werden.

Jedes Teil ist der Arbeitsfolge nach numeriert. Vergessen Sie nicht die jeweiligen Zahlen auf die Rückseite der Einzelteile zu schreiben.

Falten :

Die Faltlinien erst falzen, nachdem Sie sie mit einem Lineal und einem Taschenmesser nachgezogen und das Papier etwas aufgeritzt haben.

Die Linien ---- bedeuten, daß das Papier von der bedruckten Seite aus nach aussen gefaltet werden muss.

Diese Linien ----- entsprechen dagegen einem Falten des Papiers von der bedruckten Seite aus nach innen.

Zusammenkleben :

Die kleingedruckten Zahlen kennzeichnen die Stelle wo die Teile mit den entsprechenden Zahlen angeklebt werden müssen.

Herstellungsanleitung im Inneren.

DIORAMAS

« LE PETIT THEATRE DE L'HISTOIRE »

Tableaux en relief à découper et à coller.

- Le serment du Jeu de Paume
- La prise de la Bastille
- La fête de l'Être suprême
- La Galerie des Glaces à Versailles
- Bonaparte au pont d'Arcole

Collections dirigées par Nicole Fabre

DESSINS : A. AUGÉ et L. GONIN, architectes D.P.L.G.
MISE EN COULEURS : J.F. RAGON

COLLECTION

« PIERRES DE PAPIER »

Maquettes disponibles :

LE MONT SAINT-MICHEL

PARIS :

- Notre-Dame
- La Tour Eiffel
- La place des Vosges
- Le Centre Pompidou
- L'Ecole Militaire
- Montmartre et le Sacré-Cœur
- Les Invalides

VERSAILLES :

- Le petit Trianon

CLERMONT-FERRAND :

Une cathédrale gothique

ATHÈNES :

Le Parthénon

Albums-découpages pour enfants :

- n°1 - 10 maisons de France
- n°2 - Maisons et châteaux de France
- n°3 - Château de Chenonceau
- n°4 - Château d'Azay-le-Rideau
- n°5 - Château de Chambord
- n°6 - 10 fermes de France
- n°7 - 10 maisons du monde

Hors série :

Je construis ma maison de poupées.

MODÈLE DÉPOSÉ



© EDITIONS PASCALINE 1989 - 5, rue Pascal - 63000 Clermont-Ferrand - Tél. (16) 73.92.70.67

Imprimé en France - Dépôt légal Mai 1989 - ISBN 2.905169.23.0